

CLASS series enclosures sees the introduction of new versions for **Heavy Duty** aggressive environments distinguishable by the colour RAL 9005 black.

The Heavy Duty series is specially **designed for industrial applications where particularly aggressive external agents are present** (e.g. salty environments, etc.).

The range includes enclosures in the 8 basic sizes and in dual versions with 32 and 48 poles.
The enclosures may be bulkhead, surface-mounting or hoods with side or top entry.

The new version is **distinguished by the black colour** and has the following characteristics:

- new **chromate die-casting** treatment (RoHS compliant) providing **50% improvement in resistance in salt spray tests** (according to UNI EN ISO 9227) compared to the previous green versions
- **oven painted with epoxy polyester powder** (improved resistance to chemical agents compared to epoxy polyester).

Other construction characteristics are:

1) CKA..W and MKA..W series

- 21.21 size inserts
- gaskets in anti-aging fluoro elastomer
- monoblock locking device in stainless steel

2) CH..W, CA..W and MH..W, MA..W series

- 44.27, 57.27, 77.27, 104.27, 77.62, 104.62, 66.40 size inserts
- gaskets in anti-aging fluoro elastomer
- pegs in stainless steel
- CLASS type levers (stainless steel lever body, springs and pins, lever in thermoplastic material reinforced with glass fibers)
- supplementary insulation inside enclosures

3) CZ..W and MZ..W series

- 49.16, 66.16 size inserts
- locking device with levers, springs and pins in stainless steel
- pegs in stainless steel
- supplementary insulation inside enclosures

UL approved for USA and Canada for protection ratings **UL Type 4 (= NEMA 4)**, **UL Type 4X (= NEMA 4X)** and **UL Type 12 (= NEMA 12)** according to the American standard ANSI/UL 50.

With connector complete and with appropriate cable glands, it is possible to guarantee **IP44, IP66 protection** compliant with EN 60529 and **IP69K** compliant with DIN 40050-9 (water jet at 80 °C (± 5 °C) at a pressure of 80bar ÷ 100 bar, for a period of 30s for each angle of inclination 0°, 30°, 60° and 90° w.r.t the plane).

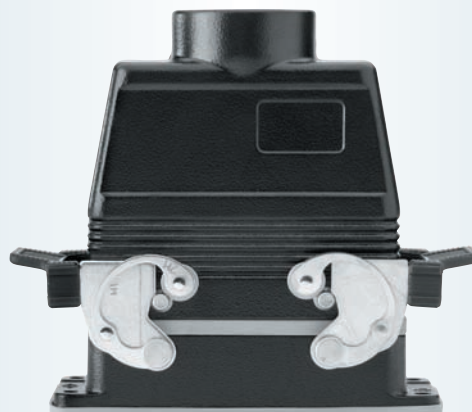
Ambient temperature limits from -40 °C to +125 °C.

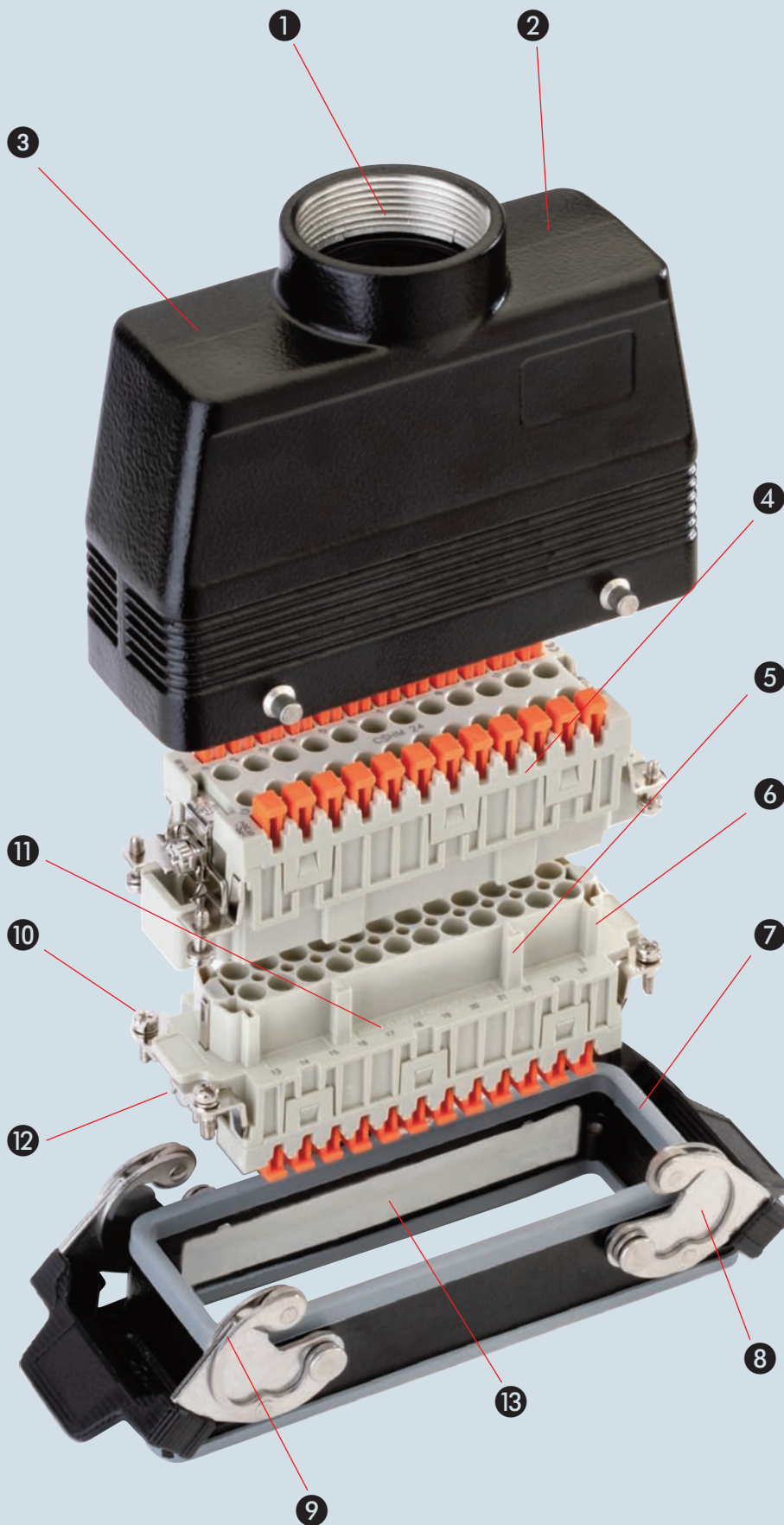
Enclosures **can accommodate all connector inserts** with crimp, screw, spring and the innovative Squich ® connection.

The enclosures do not have any internal tabs and therefore **allow insertion of CME inserts** with rated voltage of 830V, thanks to the additional insulation strips placed inside.

The new series joins the family of traditional CLASS series enclosures and will support **the various solutions: standard (grey), for temperatures up to 180 °C (red), with protection rating IP68, in thermoplastic insulating material (T-Type) and with vertical lever locking system (V-Type).**

The new enclosures for aggressive environments in RAL 9005 black replace the previous and similar green versions.





- ❶ Threaded cable passage in various Pg diameters (types with pre-code "C") or metric passage (types with pre-code "M") in accordance with EN 60423, for cable entry devices in accordance with EN 50262 (NPT threading on request), may be located vertically, horizontally or frontally.
- ❷ Sturdy foundry grade aluminium alloy enclosures with stainless steel treated pegs. Fixed surface-mounted, bulkhead and hood versions are available.
- ❸ Metallic enclosures with a coated finish of epoxy-polyester with high resistance to mechanical stress and external agents. New chromate die-casting treatment (RoHS compliant) providing 50% improvement in resistance in salt spray tests (according to UNI EN ISO 9227) compared to the previous green versions.
- ❹ The inserts are made of UL certified self-extinguishing fibreglass reinforced thermoplastics, and feature an operating temperature range between -40 °C and +125 °C.
- ❺ Insert profile polarised with asymmetrical guides to avoid incorrect matings. The inserts have a mechanical life equal to or higher than 500 mating cycles.
- ❻ Inserts are manufactured in compliance with European standard EN 61984 (DIN VDE 0627), certified and identified with UL, CSA, CCC, GL and GOST markings.
- ❼ Gaskets in anti-aging, oil-resistant and fuel-resistant fluoro elastomer.
- ❽ Stainless steel closure levers and springs guarantee a perfect closure and sealing.
- ❾ Locking device available in two versions, simple (with one lever), or double (with two levers).
- ❿ Captive insert fastening screws, with anti-slackening spring washer
- ⓫ Contact position identified with numbers or codes on both sides of each insert and printed with a laser system or from a die.
- ⓫ Protective earth terminal with a wide contact surface.
- ⓫ Supplementary insulation inside enclosures

inserts:

CK	3 poles + ⊕	40
CK	4 poles + ⊕	40
CKS	3 poles + ⊕	41
CKS	4 poles + ⊕	41
CD	8 poles + ⊕	46
CDA	5 poles + ⊕	69
CDC	12 poles + ⊕	68

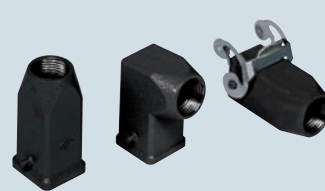
insert dimensions:

21 x 21 mm

bulkhead mounting housings
straight and angled

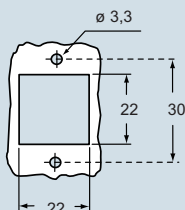


hoods



description	part no. (entry - Pg 11)	part no. (entry - M 20)	part no. (entry - Pg 11)	part no. (entry - M 20)
with stainless steel lever without cable gland, stainless steel lever without cable gland, stainless steel lever without cable gland, stainless steel lever	CKAXW 03 I CKAXW 03 IA CKAXW 03 IAP CKAXW 03 AP	MKAXW IAP20 MKAXW AP20		
with pegs, top entry with pegs, top entry			CKAW 03 V CKAW 03 VA	MKAW V20 MKAW VA20
with stainless steel lever, top entry			CKAXW 03 VG	MKAXW VG20
gasket and screw kit for IP66/IP67 ¹⁾ for CK, CQ 05, CKS inserts	CKR 65		CKR 65	
gasket and screw kit for IP66/IP67 ¹⁾ for CD 08 inserts	CKR 65 D		CKR 65 D	

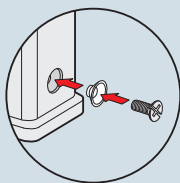
panel cut-out for bulkhead mounting housings in mm



1) To obtain the protection rating IP66/IP67 a kit is provided that includes a gasket to fit under the insert fixing screws supplied with the kit (see illustrative example)

Note:

CQ 12 inserts are already supplied with a gasket and screw which ensure IP66/IP67 protection rating.



CALUS

Type 12
Type 4/4X only
with CKR 65 (D)

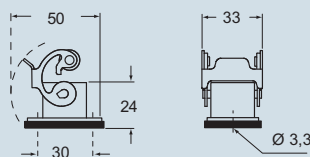


IP66/IP67 with CKR 65 (D) ¹⁾
IP69K (compliant with DIN 40050-9)

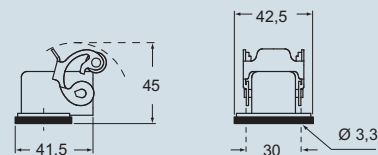
dimensions shown are not binding
and may be changed without notice

dimensions in mm

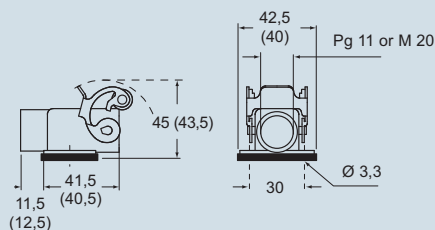
CKAXW I



CKAXW IA

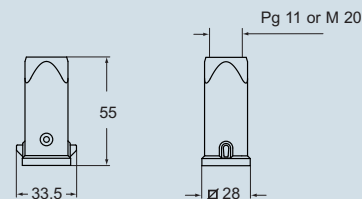


CKAXW IAP (CKAXW AP) and
MKAXW IAP (MKAXW AP)

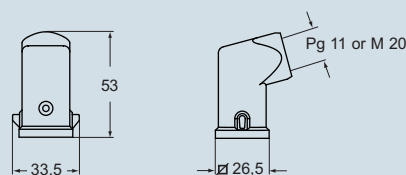


dimensions in mm

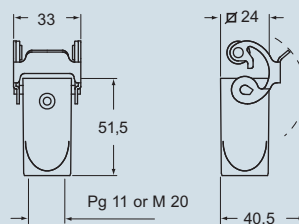
CKAW V and MKAW V



CKAW VA and MKAW VA



CKAXW VG and MKAXW VG



inserts:

CK	15 poles + ⊕	47
CK	10 poles + ⊕	72
CK	10 poles + ⊕	73
MIXO	1 module	156+195

insert centre distance:
49 x 16 mm

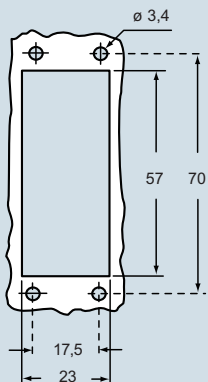
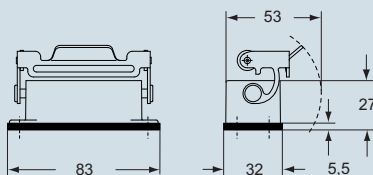
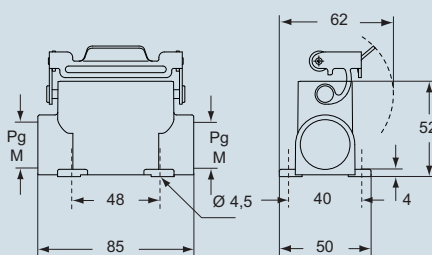
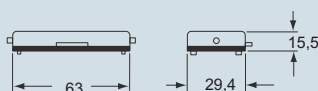
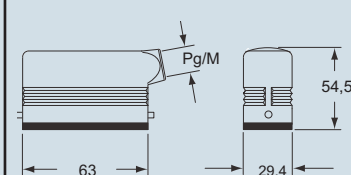
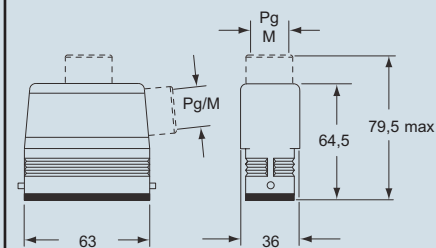
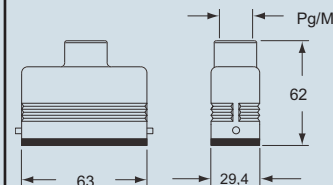
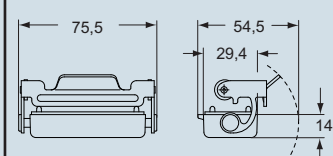
The covers for L and LG versions cannot be used together with coding pins.

If this application is required, please contact ILME SpA.

housings and cover

hoods and cover


description	part no.	entry Pg	part no.	entry M	part no.	entry Pg	part no.	entry M
bulkhead mounting housing with lever	CZIW 15 L	—						
surface mounting housing, with lever	CZPW 15 L2	16 x 2	MZPW 15 L225	25 x 2				
cover with pegs (for 1 lever enclosures)	CZCW 15 L							
enclosure with pegs, side entry					CZOW 15 L	16	MZOW 15 L20	20
enclosure with pegs, side entry							MZOW 15 L25	25
enclosure with pegs, side entry, high construction					CZAOW 15 L21	21	MZAOW 15 L25	25
enclosure with pegs, top entry					CZVW 15 L	13,5	MZVW 15 L20	20
enclosure with pegs, top entry, high construction					CZAVW 15 L21	21	MZAVW 15 L25	25
cover with lever (for enclosures with pegs)					CZCW 15 LG			

panel cut-out for bulkhead mounting housing in mm

dimensions in mm
CZIW L

CZPW L and MZPW L

CZCW L

dimensions in mm
CZOW L and MZOW L

CZAOW L - MZAOW L and CZAVW L - MZAVW L

CZVW L and MZVW L

CZCW LG


CAVUS Type 4/4X/12



IP69K (compliant with DIN 40050-9)

dimensions shown are not binding
and may be changed without notice

inserts:

CD	25 poles + ⊕	48
CDD	38 poles + ⊕	60
CDA	16 poles + ⊕	74
CK	16 poles + ⊕	75

insert centre distance:

66 x 16 mm

The covers for L and LG versions cannot be used together with coding pins.

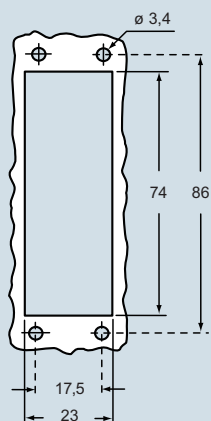
If this application is required, please contact ILME SpA.

housings and cover

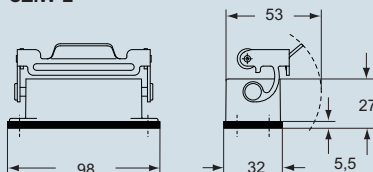
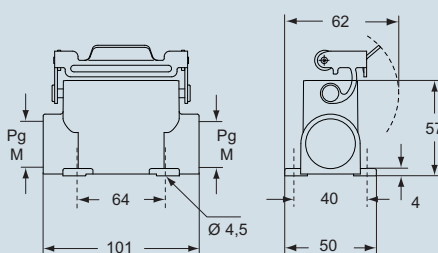
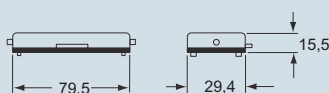
hoods and cover


description	part no.	entry Pg	part no. no.	entry M	part no. no.	entry Pg	part no.	entry M
bulkhead mounting housing with lever	CZIW 25 L	—						
surface mounting housing, with lever	CZAPW 25 L2	16 x 2	MZAPW 25L225	25 x 2				
cover with pegs (for 1 lever enclosures)	CZCW 25 L							
enclosure with pegs, side entry					CZOW 25 L	16	MZOW 25 L20	20
enclosure with pegs, side entry							MZOW 25 L25	25
enclosure with pegs, side entry, high construction					CZAOW 25 L21	21	MZAOW 25 L25	25
enclosure with pegs, top entry					CZVW 25 L	16	MZVW 25 L20 *	20
enclosure with pegs, top entry, high construction					CZAVW 25 L21	21	MZAVW 25 L25	25
cover with lever (for enclosures with pegs)					CZCW 25 LG			

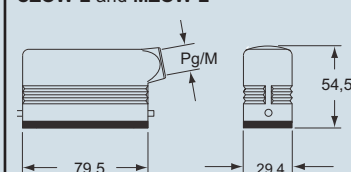
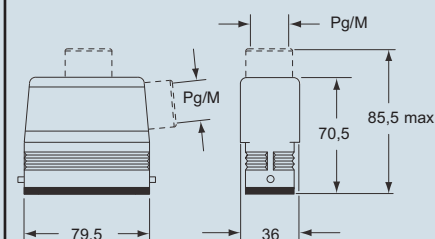
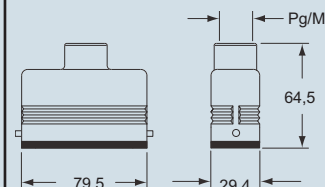
panel cut-out for bulkhead mounting housings in mm



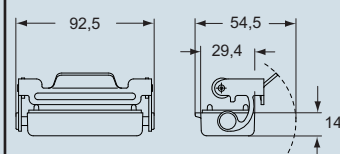
dimensions in mm

CZIW L

CZAPW L and MZAPW L

CZCW L


dimensions in mm

CZOW L and MZOW L

CZAOW L - MZAOW L and CZAVW L - MZAVW L

CZVW L and MZVW L


* can only be used with a complete cable gland (to be purchased separately)

CZCW LG


Type 4/4X/12



IP69K (compliant with DIN 40050-9)

 dimensions shown are not binding
and may be changed without notice

inserts:

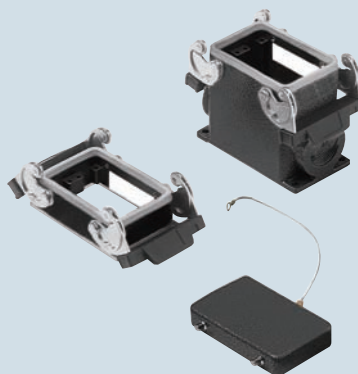
CD	50	poles + ⊕	50
CDD	76	poles + ⊕	63
CDA	32	poles + ⊕	76
CDC	32	poles + ⊕	77

insert dimensions:

2 x (66 x 16) mm

CHCW 50 and CHCW 50 G covers cannot be used together with coding pins. If this application is required, please contact ILME SpA.

housings and cover

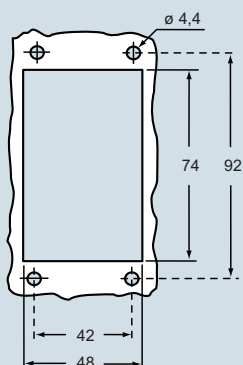


hoods and cover



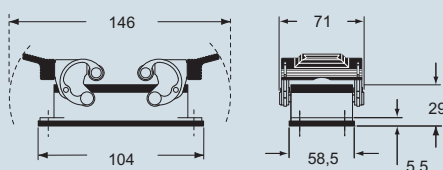
description	part no.	entry Pg	part no.	entry M	part no.	entry Pg	part no.	entry M
bulkhead mounting housings with lever	CHIW 50	—						
surface mounting housing, with lever	CHPW 50.21	21	MHPW 50.32	32				
surface mounting housing, with lever	CHPW 50.229	29 x 2	MHPW 50.250	50 x 2				
cover with 4 pegs (for housings with 2 levers)	CHCW 50							
enclosure with pegs, side entry					CHOW 50	21	MHOW 50.25	25
enclosure with pegs, side entry							MHOW 50.32	32
enclosure with pegs, side entry, high construction					CAOW 50.29	29	MAOW 50.32	32
enclosure with pegs, top entry, high construction					CAVW 50.29	29	MAVW 50.32	32
cover with 2 levers (for enclosures with 4 pegs)					CHCW 50 G			

panel cut-out for bulkhead mounting housings in mm

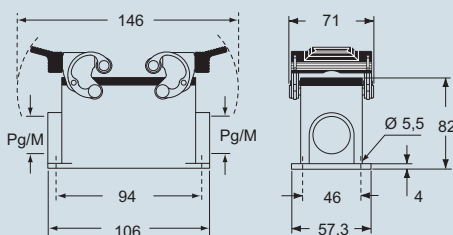


dimensions in mm

CHIW



CHPW and MHPW

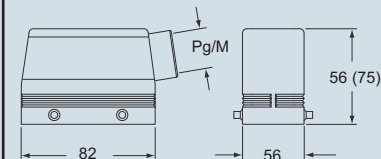


CHCW

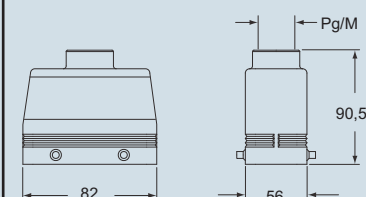


dimensions in mm

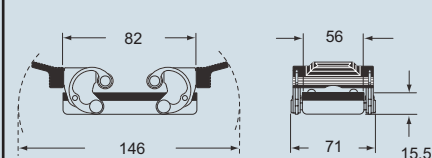
CHOW (CAOW) and MHOW (MAOW)



CAVW and MAVW



CHCW G



CALUS Type 4/4X/12



IP69K (compliant with DIN 40050-9)

dimensions shown are not binding
and may be changed without notice

CH - CA and MH - MA enclosures size "44.27" for aggressive environments



inserts:

CDD	24	poles + ⊕	59
CQE	10	poles + ⊕	80
CSH	6	poles + ⊕	88
CCE	6	poles + ⊕	94
CNE, CSE, JCNE, JCSE	6	poles + ⊕	95 and 106
CSS	6	poles + ⊕	118
CT, CTE, CTSE *) (16A)	6	poles + ⊕	126 and 130
MIXO	2	modules	156÷195

*) only for enclosure **CHIW 06 L**

insert centre distance:
44 x 27 mm

housings and cover

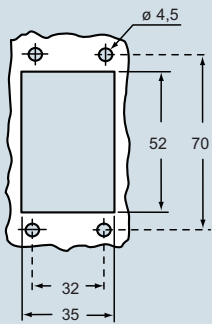


hoods and cover



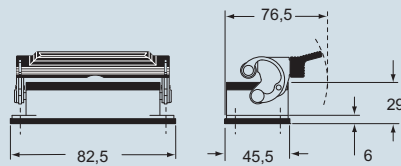
description	part no.	entry Pg	part no.	entry M	part no.	entry Pg	part no.	entry M
bulkhead mounting housing with lever	CHIW 06 L	—						
surface mounting housing, with lever	CAPW 06 L	21	MAPW 06 L32	32				
cover with pegs (for 1 lever enclosures)	CHCW 06 L							
enclosure with pegs, side entry, high construction					CAOW 06 L21	21	MAOW 06 L32	32
enclosure with pegs, top entry, high construction					CAVW 06 L21	21	MAVW 06 L32	32
cover with lever (for enclosures with pegs)					CHCW 06 LG			
enclosure with pegs and gasket, side entry, high construction					CAVW 06 LG	21	MAVW 06 LG32	32

panel cut-out for bulkhead mounting housings in mm

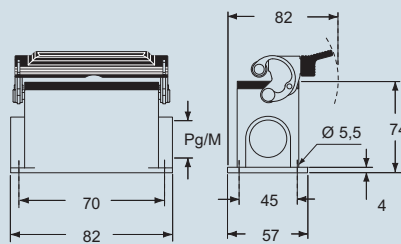


dimensions in mm

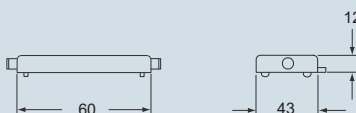
CHIW L



CAPW L and MAPW L

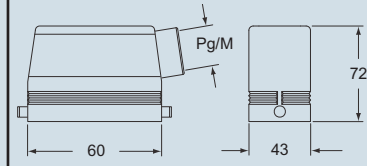


CHCW L

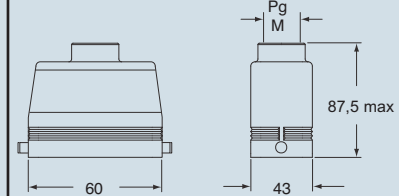


dimensions in mm

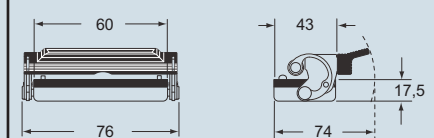
CAOW L and MAOW L



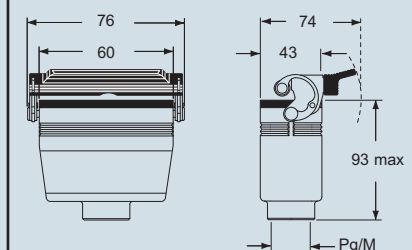
CAVW L and MAVW L



CHCW LG



CAVW LG and MAVW LG



CALUS® Type
4/4X/12



IP69K (compliant with DIN 40050-9)

dimensions shown are not binding
and may be changed without notice

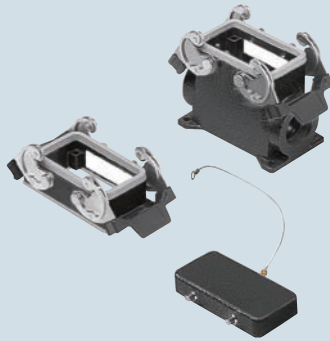
inserts:

CDD	42	poles + ⊕	61
CQE	18	poles + ⊕	81
CSH	10	poles + ⊕	89
CCE	10	poles + ⊕	96
CNE, CSE, JCNE, JCSE	10	poles + ⊕	97 and 107
CSS	10	poles + ⊕	119
CT, CTE, CTSE *) (16A)	10	poles + ⊕	127 and 131
CMSE	3+2	poles + ⊕	135
CMCE	3+2(aux)	poles + ⊕	134
CME	3+2(aux)	poles + ⊕	135
CX	8/24	poles + ⊕	151
MIXO	3	modules	156÷195

*) only for enclosure CHIW 10

insert centre distance: 57 x 27 mm

housings and cover

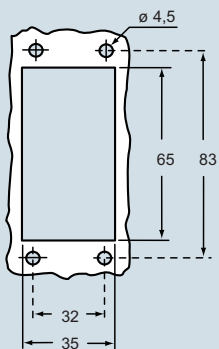


hoods and cover



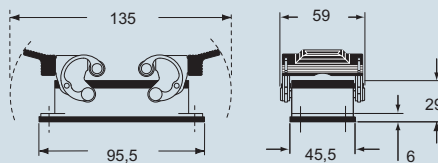
description	part no.	entry Pg	part no.	entry M	part no.	entry Pg	part no.	entry M
bulkhead mounting housing with levers	CHIW 10	—						
surface mounting housing, with levers, high construction	CAPW 10.21	21	MAPW 10.32	32				
cover with 4 pegs (for enclosures with 2 levers)	CHCW 10							
enclosure with pegs, side entry, high construction					CAOW 10.21	21	MAOW 10.32	32
enclosure with pegs, top entry, high construction					CAVW 10.21	21	MAVW 10.32	32
cover with 2 levers (for enclosures with 4 pegs)					CHCW 10 G			
enclosure with levers and gasket, top entry, high construction					CAVW 10 G	21	MAVW 10 G32	32

panel cut-out for bulkhead mounting housings in mm

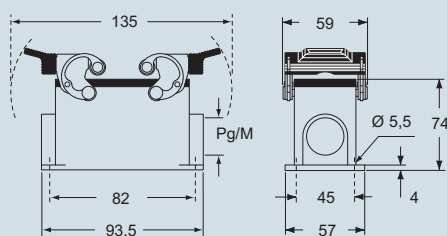


dimensions in mm

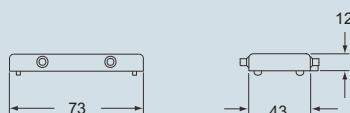
CHIW



CAPW and MAPW

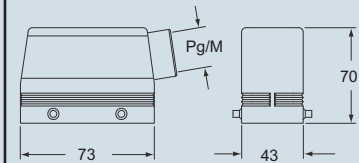


CHCW

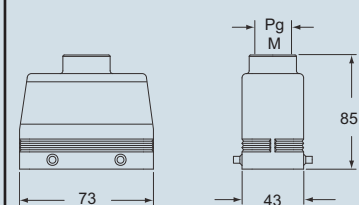


dimensions in mm

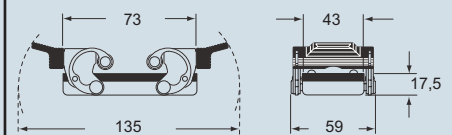
CAOW and MAOW



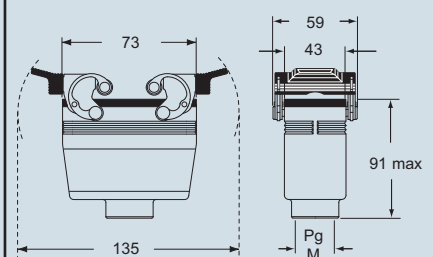
CAVW and MAVW



CHCW G



CAVW G and MAVW G



CU® Type 4/4X/12



IP69K (compliant with DIN 40050-9)

dimensions shown are not binding
and may be changed without notice

inserts:

CD	40	poles + ⊕	49
CT, CTS *) (10A)	40	poles + ⊕	56
CDD	72	poles + ⊕	62
CQE	32	poles + ⊕	82
CSH	16	poles + ⊕	90
CCE	16	poles + ⊕	98
CNE, CSE, JCNE, JCSE	16	poles + ⊕	99 and 108
CSS	16	poles + ⊕	120
CT, CTE, CTSE *) (16A)	16	poles + ⊕	128 and 132
CMSE, CMCE..... 6+2(aux)	poles + ⊕	137 and 136	
CME	6+2(aux)	poles + ⊕	137
CP	6	poles + ⊕	149
CX	6/36/ and 12/2	poles + ⊕	152+153
CX	4/0/ and 4/2	poles + ⊕	154
MIXO	4	modules	156+195

*) only for enclosure **CHIW 16**

insert centre distance: **77.5 x 27 mm**

housings and cover

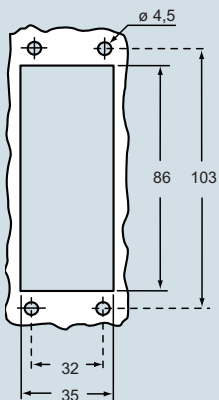


hoods and cover



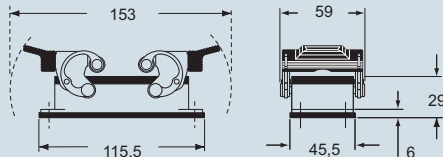
description	part no.	entry Pg	part no.	entry M	part no.	entry Pg	part no.	entry M
bulkhead mounting housing with levers	CHIW 16	—						
surface mounting housing, with levers, high construction	CAPW 16.21	21	MAPW 16.32	32				
cover with 4 pegs (for enclosures with 2 levers)	CHCW 16							
enclosure with pegs, side entry,					CHOW 16	21	MHOW 16.25	25
enclosure with pegs, side entry,							MHOW 16.32	32
enclosure with pegs, side entry, high construction					CAOW 16.29	29	MAOW 16.32	32
enclosure with pegs, side entry, high construction							MHOW 16.40	40
enclosure with pegs, top entry,					CHVW 16	21	MHVW 16.25	25
enclosure with pegs, top entry,							MHVW 16.32	32
enclosure with pegs, top entry, high construction					CAVW 16.29	29	MAVW 16.32	32
enclosure with pegs, top entry high construction							MAVW 16.40	40
cover with 2 levers (for enclosures with 4 pegs)					CHCW 16 G			
enclosure with levers, top entry, high construction					CAVW 16 G29	29	MAVW 16 G32	32

panel cut-out for bulkhead mounting housings in mm

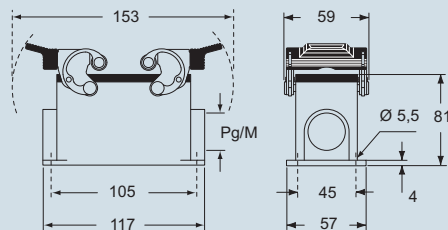


dimensions in mm

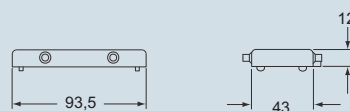
CHIW



CAPW and MAPW

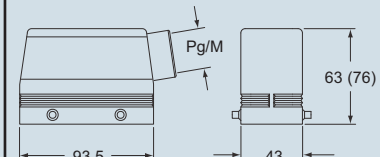


CHCW

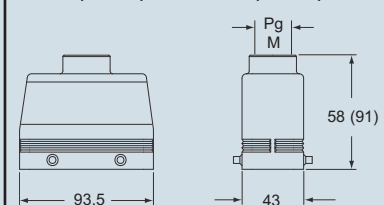


dimensions in mm

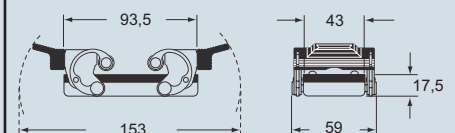
CHOW (CAOW) and MHOW (MAOW)



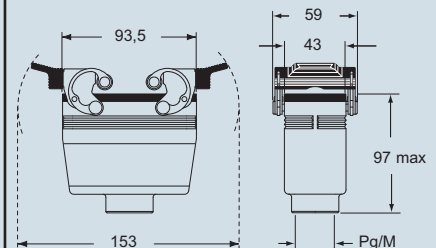
CHVW (CAVW) and MHVW (MAVW)



CHCW G



CAVW G and MAVW G



CALUS Type 4/4X/12



IP69K (compliant with DIN 40050-9)

dimensions shown are not binding
and may be changed without notice

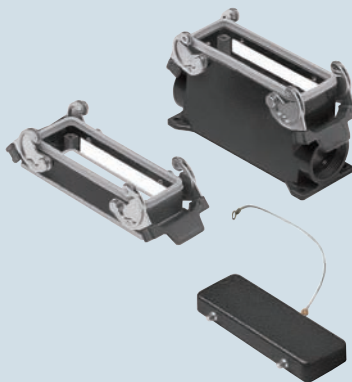
inserts:

CD	64	poles + ⊕	51
CT, CTS *) (10A)	64	poles + ⊕	57
CDD	108	poles + ⊕	64
CQE	46	poles + ⊕	83
CSH	24	poles + ⊕	91
CCE	24	poles + ⊕	100
CNE, CSE, JCNE, JCSE	24	poles + ⊕ 101 and 109	
CSS	24	poles + ⊕	121
CT, CTE, CTSE *) (16A)	24	poles + ⊕ 129 and 133	
CMSE, CMCE	10+2(aux)	poles + ⊕ 139 and 138	
CME	10+2(aux)	poles + ⊕	139
CME	16+2(aux)	poles + ⊕	145
CMCE	16+2(aux)	poles + ⊕	144
CX	4/8	poles + ⊕	155
MIXO	6	modules	156+195

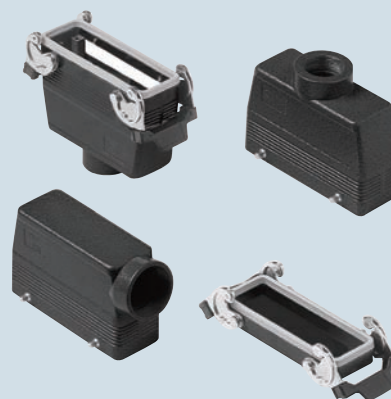
*) only for enclosure CHIW 24

insert centre distance: 104 x 27 mm

housings and cover

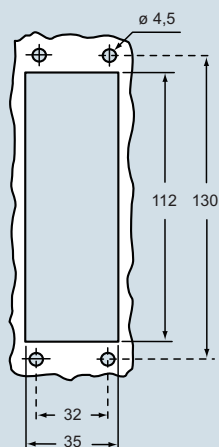


hoods and cover



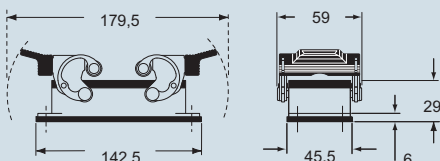
description	part no.	entry Pg	part no.	entry M	part no.	entry Pg	part no.	entry M
bulkhead mounting housing with levers	CHIW 24	—						
surface mounting housing, with levers, high construction	CAPW 24.21	21	MAPW 24.32	32				
cover with 4 pegs (for enclosures with 2 levers)	CHCW 24							
enclosure with pegs, side entry,					CHOW 24	21	MHOW 24.25	25
enclosure with pegs, side entry,							MHOW 24.32	32
enclosure with pegs, side entry, high construction					CAOW 24.29	29	MAOW 24.32	32
enclosure with pegs, side entry, high construction							MAOW 24.40	40
enclosure with pegs, top entry,					CHVW 24	21	MHVW 24.25	25
enclosure with pegs, top entry,							MHVW 24.32	32
enclosure with pegs, top entry, high construction					CAVW 24.29	29	MAVW 24.32	32
enclosure with pegs, top entry, high construction							MAVW 24.40	40
cover with 2 levers (for enclosures with 4 pegs)					CHCW 24 G			
enclosure with levers and gasket, top entry					CHVW 24 G	21	MHVW 24 G32	32

panel cut-out for bulkhead mounting housings in mm

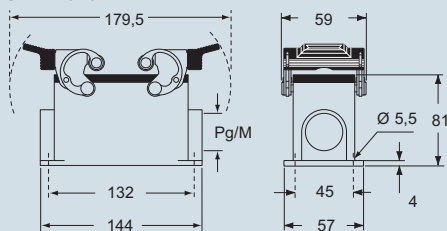


dimensions in mm

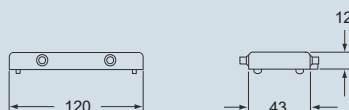
CHIW



CAPW and MAPW

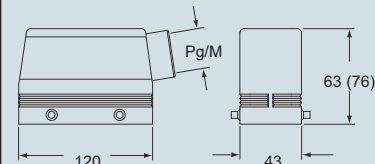


CHCW

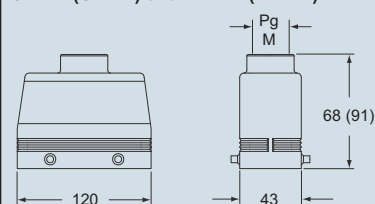


dimensions in mm

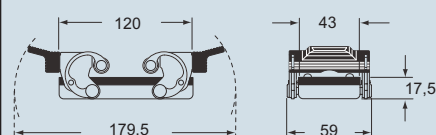
CHOW (CAOW) and MHOW (MAOW)



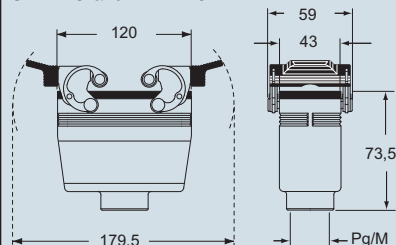
CHVW (CAVW) and MHVW (MAVW)



CHCW G



CHVW G and MHVW G



CAVUS Type 4/4X/12



IP69K (compliant with DIN 40050-9)

dimensions shown are not binding
and may be changed without notice

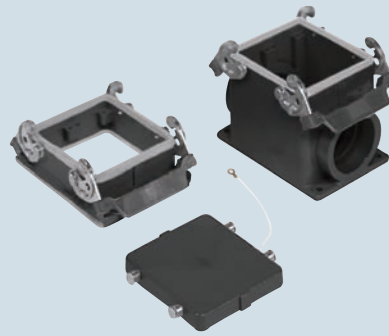
inserts:

CD	80	poles + ⊕	52
CDD	144	poles + ⊕	65
CQE	64	poles + ⊕	84
CSH	32	poles + ⊕	92
CCE	32	poles + ⊕	102
CNE, CSE, JCNE, JCSE	32	poles + ⊕ 103 and 110	
CSS	32	poles + ⊕	122
CMSE	12+4(aux)	poles + ⊕	141
CMCE	12+4(aux)	poles + ⊕	140
CME	12+4(aux)	poles + ⊕	141
CP	12	poles + ⊕	150
MIXO	4+4	modules	156+195

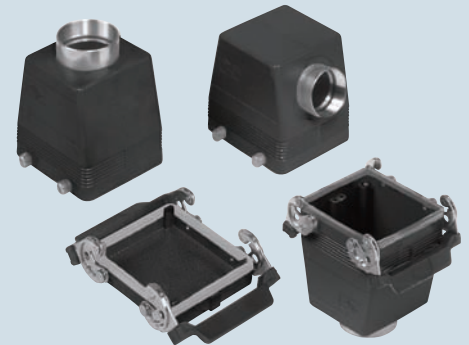
insert centre distance:

2 x (77.5 x 27) mm

housings and cover

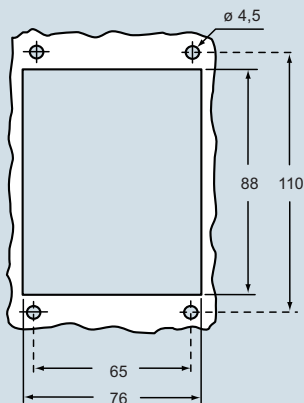


hoods and cover



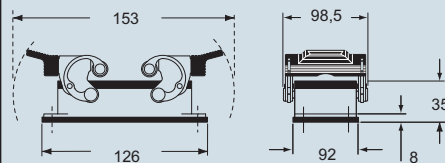
description	part no.	entry Pg	part no.	entry M	part no.	entry Pg	part no.	entry M
bulkhead mounting housing with levers	CHIW 32	—						
surface mounting housing, with levers	CHPW 32	36	MHPW 32.50	50				
cover with 4 pegs (for enclosures with 2 levers)	CHCW 32							
enclosure with pegs, top entry, enclosure with pegs, top entry,					CHOW 32	36	MHOW 32.40	40
					CHVW 32	36	MHVW 32.40	40
cover with 2 levers (for enclosures with 4 pegs)					CHCW 32 G			
enclosure with pegs and gasket, side entry, high construction					CHVW 32 G	36	MHVW 32 G40	40

panel cut-out for bulkhead mounting housings in mm

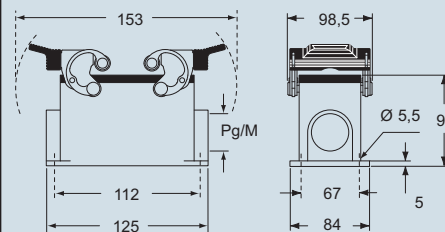


dimensions in mm

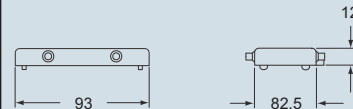
CHIW



CHPW and MHPW

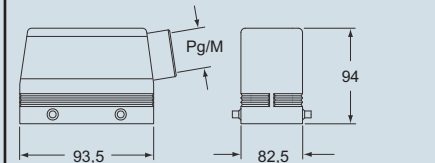


CHCW

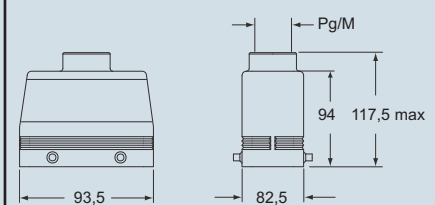


dimensions in mm

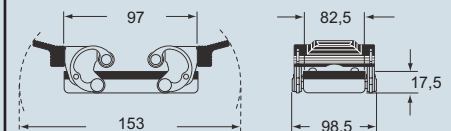
CHOW and MHOW



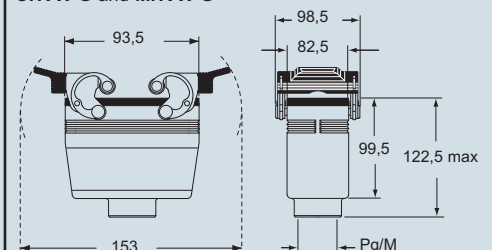
CHVW and MHVW



CHCW G



CHVW G and MHVW G



CALUS Type
4/4X/12



IP69K (compliant with DIN 40050-9)

dimensions shown are not binding
and may be changed without notice

inserts:

CD	128	poles + ⊕	53
CDD	216	poles + ⊕	66
CQE	92	poles + ⊕	85
CSH	48	poles + ⊕	93
CCE	48	poles + ⊕	104
CNE, CSE, JCNE, JCSE	48	poles + ⊕	105 and 111
CSS	48	poles + ⊕	123
CMSE	20+4(aux)	poles + ⊕	143
CMCE	20+4(aux)	poles + ⊕	142
CME	20+4(aux)	poles + ⊕	143
CME	32+4(aux)	poles + ⊕	147
CMCE	32+4(aux)	poles + ⊕	146
MIXO	6+6	modules	156+195

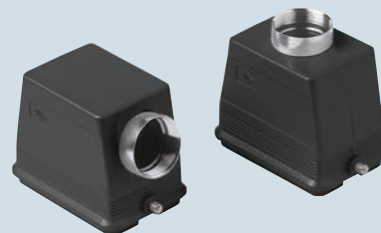
insert centre distance:

2 x (104 x 27) mm

bulkhead and surface mounting housings

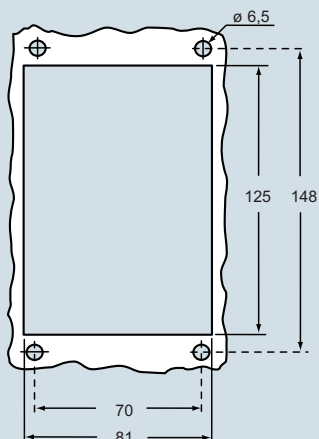


hoods



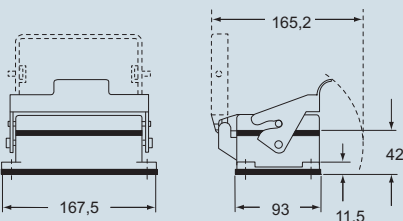
description	part no.	entry Pg	part no.	entry M	part no.	entry Pg	part no.	entry M
bulkhead mounting housings, with lever and cover	CHIW 48 LS	—						
surface mounting housings, with lever and cover	CHPW 48 LS	36 x 1/2	MHPW 48 LS40	40 x 1/2				
top entry, with pegs					CHOW 48 L	36	MHOW 48 L40	40
side entry, with pegs					CHVW 48 L	36	MHVW 48 L40	40

panel cut-out for bulkhead mounting housings in mm

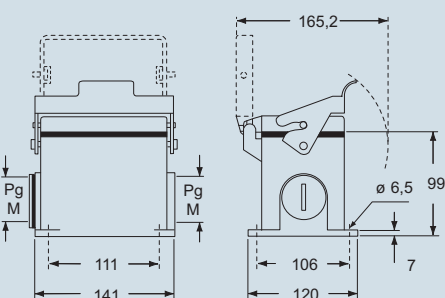


dimensions in mm

CHIW LS

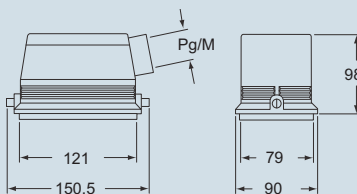


CHPW LS and MHPW LS

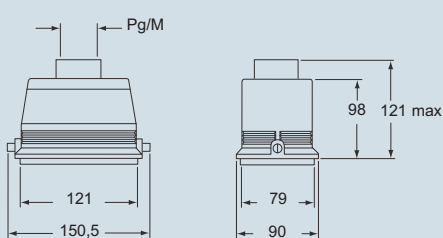


dimensions in mm

CHOW L and MHOW L



CHVW L and MHVW L



CALUS Type 4/4X/12



IP69K (compliant with DIN 40050-9)

dimensions shown are not binding
and may be changed without notice